

HEPAGEN is a choloretic digestive

with eupeptic action.

It is capable of raising the level of efficiency

of the digestive apparatus by increasing

gastric, biliary and pancreatic

secretory functions and stimulating

intestinal enzymatic activity.

HEPAGEN favours the regenerative

activities of the liver.

Its action is generally beneficial

toward the liver and its functions.

Activation of digestive processes,

improved exploitation of nutritional

substances and enhancement of the

metabolic and detoxifying functions of

hepatocytes determine rapid recovery

of the yield, health and wellbeing of

treated animals.

## PACKAGING

100 ml vial

## WITHDRAWAL TIMES

None



**Hepagen** is a water solution containing 10% phenoxy-2-methyl-propionic acid. **Hepagen** is a medicine which has choloretic activity, safe, injectable by intramuscular, intraperitoneal and endovenous routes. **Hepagen** is an injectable non-toxic choloretic drug for the treatment of diseases characterised or accompanied by liver failure. **Hepagen's** action is directed toward the liver. Its cholagogic action favours digestion. **Hepagen** is characterised by an elective action on the hepatic gland, which increases bile secretion and consequently it helps the physiological digestive functions. **Hepagen** stimulates secretory activity by means of direct action on the glandular system without leading to excitation or depression (of central or autonomic nervous systems). When administered by parenteral route, **Hepagen** is rapidly eliminated via the urine and faeces, as is, in cattle. Given the safety performance of the fact that (in sodium salt form) it is rapidly eliminated, **Hepagen** was included to annex II of Reg. 2377/90 on MRL. It may therefore be administered without withdrawal times - **COMPOSITION** - 1 ml contains, active ingredient: phenoxy-2-methyl-2-propionic acid (as sodium salt) 100 mg - Excipients to 100 ml - **THERAPEUTIC INDICATIONS** - In general: Indigestion - Alimentary toxicosis - Ketosis - Liver failure - Inappetence - Tympanism - As an adjuvant in specific therapy of gastrointestinal parasitism. In particular: **Cattle, sheep:** Alimentary toxicosis - Rumen impaction - Dyspepsia with meteorism - Ketosis (Acetonemia) - As an adjuvant during the treatment of liver fluke disease - **Horses:** Liver disorders due to unbalanced feeding - Liver failure due to Piroplasmiasis and Leptospirosis - **Swine:** Enterotoxaemia - Hepatic failure - Edema - Inappetence and constipation, also following delivery or weaning - **Dogs:** Icterus - Liver failure - As an adjuvant during the treatment of Leptospirosis and Distemper - **CONTRAINDICATIONS** - None - **UNDESIRABLE EFFECTS** - None at suggested dosages, nor after administration of higher dosages - **POSODOLOGY AND WAY OF ADMINISTRATION** - For all species in general the suggested dose is 10 mg/Kg of body weight - **Adult Cattle and Horses:** up to 300 Kg b.w. 30 ml - up to 500 Kg b.w. 40 ml - more than 500 Kg b.w. 50 ml - **Calves, foals, sheep, goats and swine:** 5 - 15 ml - **Piglets and lambs:** 1 ml/10 kg b.w. - **Dogs:** 1 ml/10 Kg b.w. inject via deep IM, intraperitoneal or slowly via intravenous route. These suggested doses can be repeated every 24 hours under veterinary supervision - **WARNINGS** - Do not mix **Hepagen** with calcium solutions - **WITHDRAWAL TIMES** - Meat: 0 days - Milk: 0 hours - **STORAGE** - Maintain at room temperature avoiding direct exposure to light and sources of heat - **KEEP OUT OF CHILDREN'S REACH** - **SHELF LIFE** - 4 years - **PACKAGING** - 100-ml vial.

Bibliography is available on request



FATRO - Pharmaceutical Veterinary Industry - 40064 Ozzano Emilia (BO) Italy - Tel. +39 051 6512711 - Fax +39 051 6512728 - www.fatro.com - e-mail: fatro@fatro.it



FOR VETERINARY PRACTITIONERS ONLY

# HEPAGEN

D I G E S T I V E  
C H O L E R E T I C  
I N J E C T A B L E

# mechanism of action

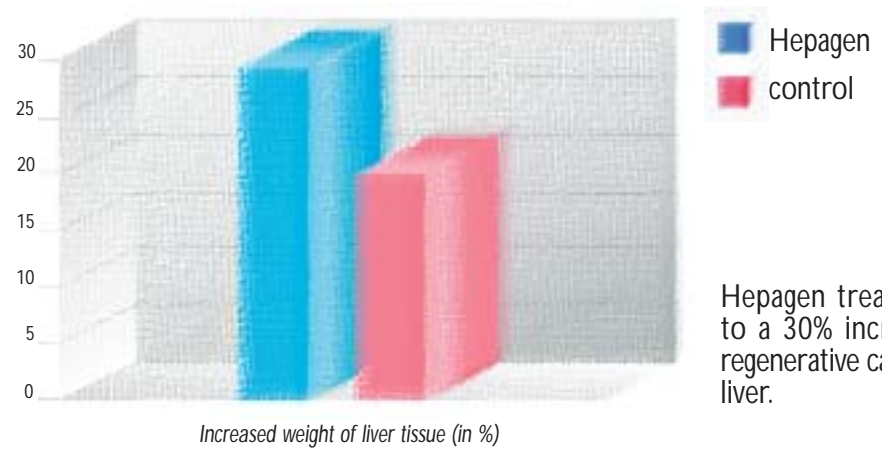
## RESTORE OF THE DIGESTIVE FUNCTIONS

- Increased gastric and pancreatic secretory activity
- Choleric and cholagogic activity
- Stimulation of intestinal enzymatic activity
- Activation of digestive processes
- Improved absorption and exploitation of nutritional substances

*Hepagen acts directly on the glands of the digestive system without altering the functions of the autonomic nervous system*

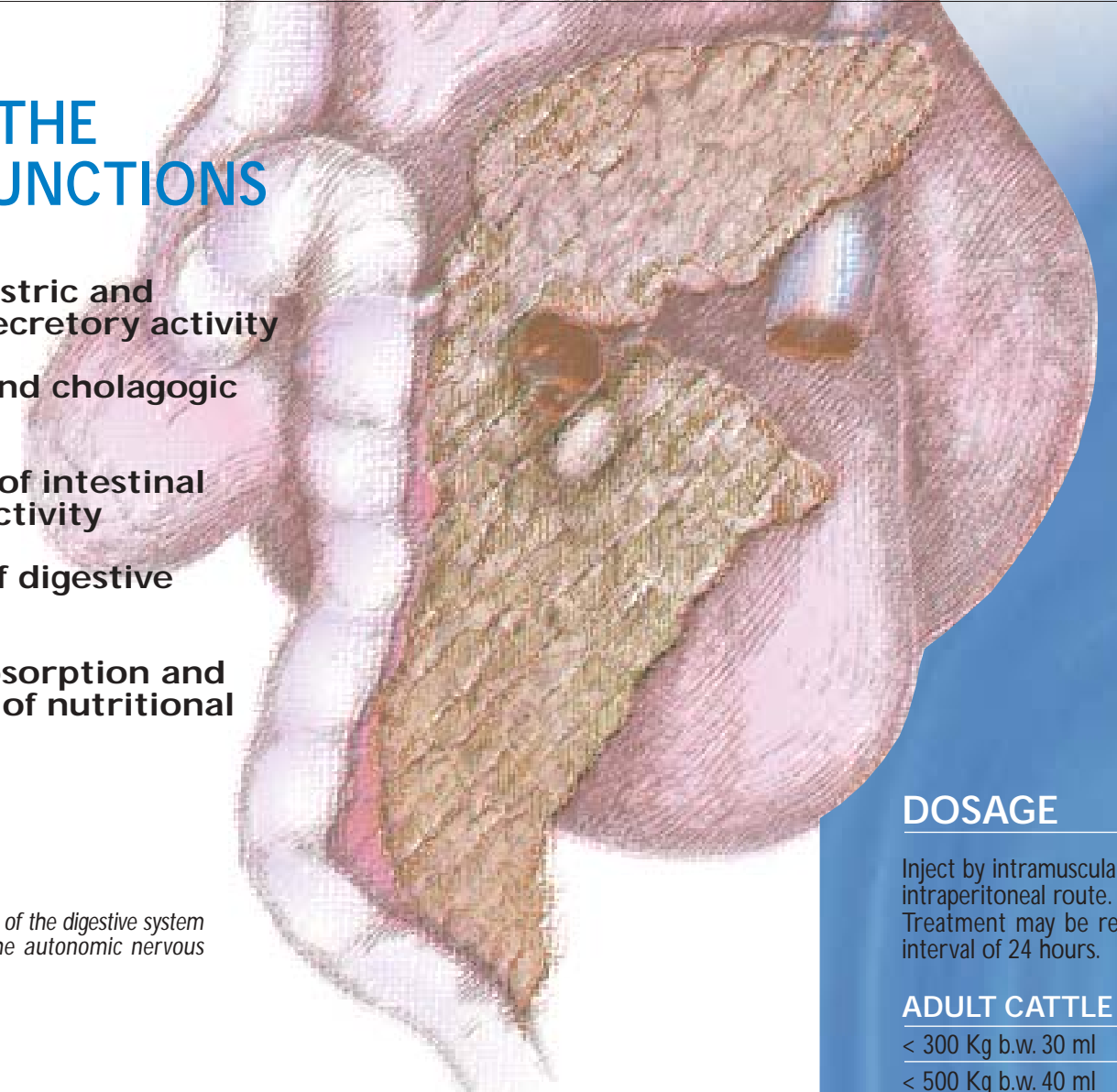
## STIMULATION OF THE REGENERATIVE ACTIVITY OF THE LIVER

**Hepagen** combines its beneficial actions on the digestive apparatus with stimulation of regeneration of hepatic tissues.  
**Hepagen** acts directly upon hepatocytes. The functions of these are activated and processes of cell repair and regeneration are favoured.



Hepagen treatment leads to a 30% increase in the regenerative capacity of the liver.

*Regenerative activity of liver tissues following administration of Hepagen to animals subjected to partial hepatectomy.*



### DOSAGE

Inject by intramuscular, intravenous or intraperitoneal route.  
 Treatment may be repeated after an interval of 24 hours.

#### ADULT CATTLE - HORSES

- < 300 Kg b.w. 30 ml
- < 500 Kg b.w. 40 ml
- > 500 Kg b.w. 50 ml

#### CALVES - FOALS - SHEEP GOATS - SWINE

5 - 15 ml

#### PIGLETS - LAMBS

1 ml/10 Kg b.w.

#### DOGS

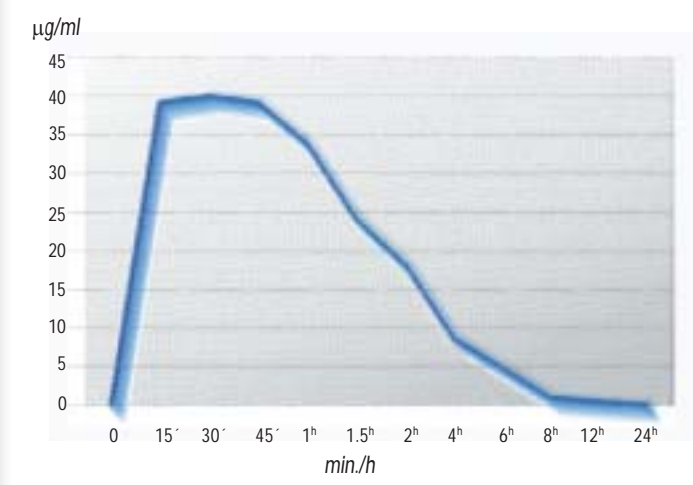
1 ml/10 Kg b.w.



# efficacy

## QUICK ACTIVITY

**Hepagen** blood peak is reached in just 30 minutes.  
 Rapid therapeutic treatment is ensured.

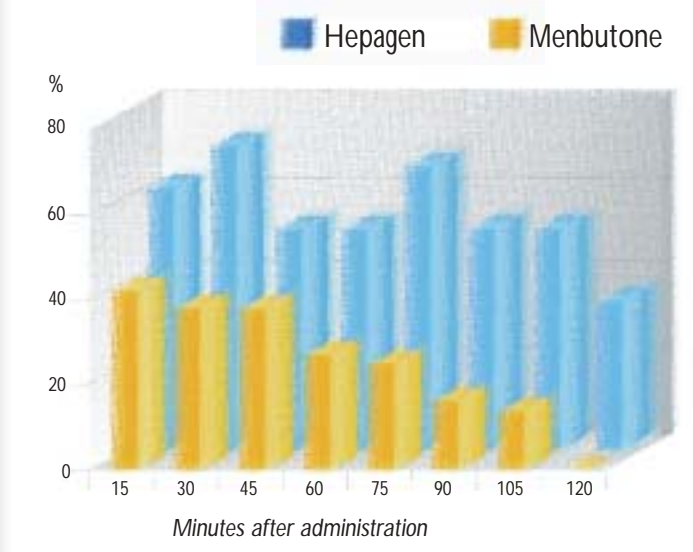


*Plasma concentration curve following intramuscular administration*

## HIGH EFFICACY

**Hepagen's** choleric and cholagogic action is prolonged and intense. Re-acquisition of digestive functions is ensured.

### INCREASED CHOLERETIC ACTIVITY

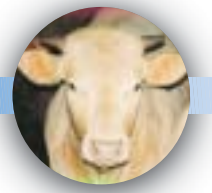


*The animals treated with Hepagen display a more marked increase in choleretic activity than those treated with Menbutone.*

**Hepagen** is indicated for all cases for which increased digestive activity is desired, and for the treatment of diseases involving hepatic failure.

### CATTLE

- Feed poisoning
- Rumen impaction
- Acidosis
- Ketosis
- Constipation
- Gastro-enteritis
- Inappetence
- Anorexia
- Post-operative ruminal atony
- Ruminal tympanism
- Liver diseases
- Fat cow syndrome



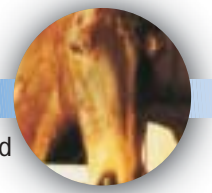
### SWINE

- Anorexia
- Constipation (sows at an advanced stage of pregnancy and in lactation)
- Nutritional diarrhoea
- Indigestion
- Alimentary intoxications
- Gastroenteritis
- Retarded development



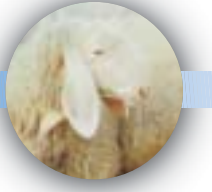
### HORSES

- Enteric and hepatic conditions caused by nutritional imbalance
- Constipation
- Intestinal atony
- Flatulent colic
- Gastro-enteritis
- Foal diarrhoea
- Liver failure (piroplasmosis and leptospirosis)



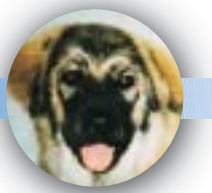
### SHEEP

- Liver parasites (*Dicrocoelium*, fluke liver)
- Feed intoxication
- Anorexia
- Inappetence
- Pregnancy toxaemia
- Adjuvant for gastrointestinal anti-parasitic treatment



### DOGS

- Jaundice
- Liver failure
- Adjuvant for leptospirosis and distemper cases
- Pancreatic dysfunction



# indications